

TO SUM UP (UNIT 5).

```
graph TD; Pitch[PITCH] --> QoS[Quality of sound]; QoS --> Hz[Hertzes (Hz)]; Hz --> High[High]; Hz --> Low[Low];
```

Infrasounds ----- 20 – 20 000 Hz ----- Ultrasounds
(Elephants) (Human hearing) (Bats, Dogs, Whales....)

MUSICAL ELEMENTS RELATED TO PITCH.

- STAFF -----

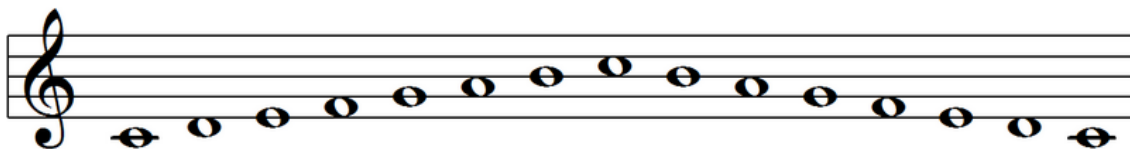
- **LEDGER LINES:** They are used when we have to write too much high or low notes.

- CLEF:

Diagram illustrating three types of musical staves:

- G clef:** Treble clef, positioned on the first line of the staff.
- F clef:** Bass clef, positioned on the fourth line of the staff.
- C clef:** Alto clef, positioned on the third line of the staff.

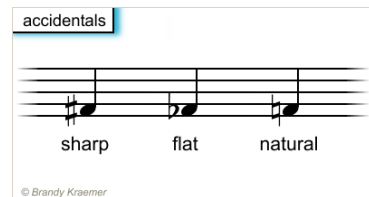
- NOTES AND SCALES:



-ACCIDENTALS: Sharp (raises the note), Flat (lowers the note), Natural (cancels other accidentals).

- INTERVAL: distance between two notes.

- **MELODY**: succession of different notes.



COMPOSER: WOLFGANG AMADEUS MOZART (1756 – 1791).

Mozart was an Austrian composer who belonged to Classicism period (18th century). As a child he travelled across Europe with his sister Nannerl, playing for kings. He is one of the most important composers in the History. Some of his works are: opera *The Magic Flute*, *Jupiter symphony*, *Requiem Mass*.

